

First Sensor   
is now part of

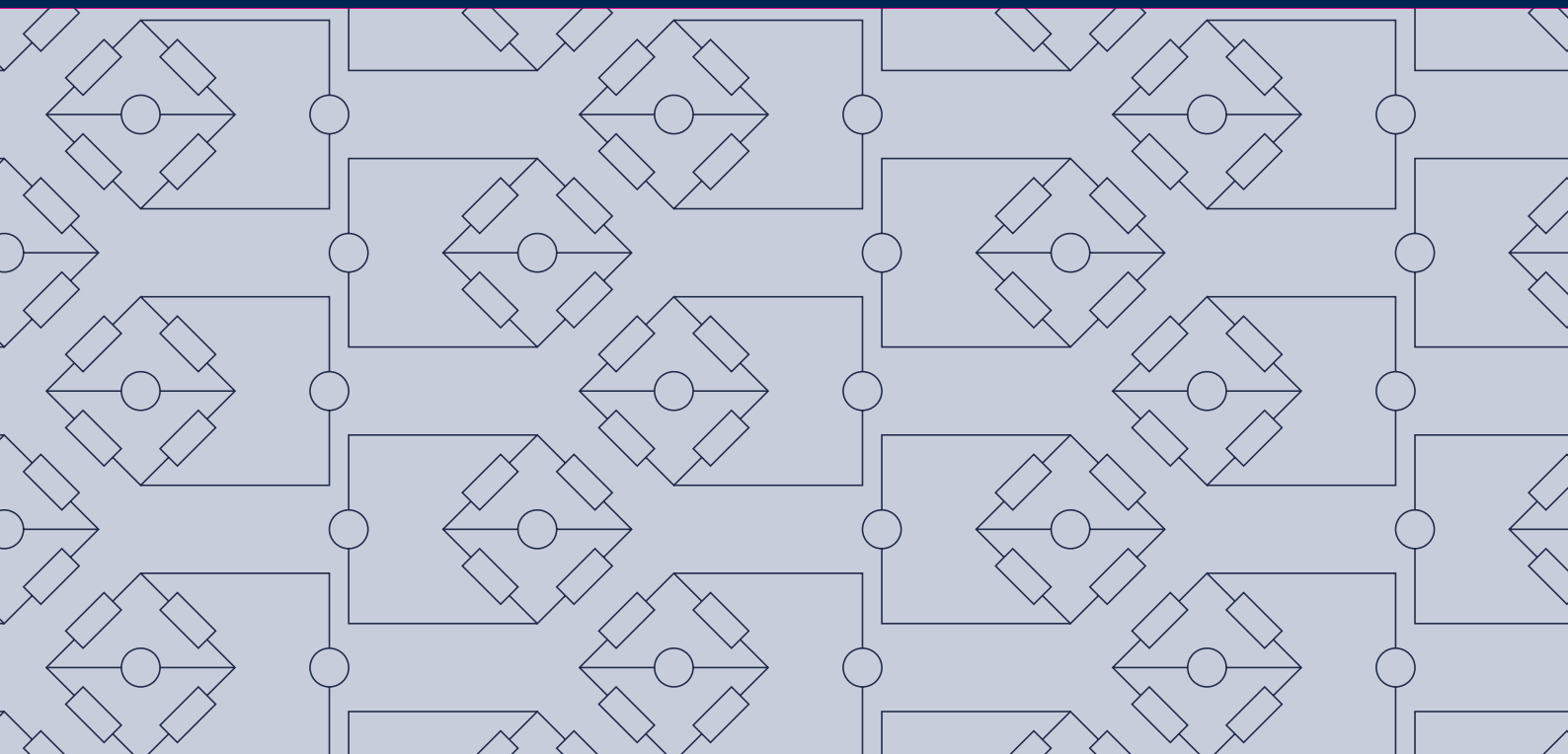


---

# I<sup>2</sup>C bus communication with digital HTD, HMI, HDI, HCLA, HCA and SSI pressure sensors

---

Application note



# I<sup>2</sup>C bus communication with digital HTD, HMI, HDI, HCLA, HCA and SSI pressure sensors

## 1. Introduction

The digital HTD, HMI, HDI, HCLA, HCA and SSI pressure sensors are calibrated and temperature compensated with an on-board ASIC, which provides a corrected digital pressure value. For the HTD, HDI, HCLA, HCA and SSI series an additional analog voltage output is available at the same time. The response time of the sensors depend on the adjusted internal resolution. For 12 bit it is typ. 0.5 ms.

The HTD, HMI, HDI, HCLA, HCA and SSI pressure sensors are configured to comply with the I<sup>2</sup>C bus protocol.

The I<sup>2</sup>C bus is a simple, serial 8-bit oriented computer bus for efficient Inter-IC (acronym I<sup>2</sup>C) control. It provides good support for communication between different IC's across short circuit-board distances, such as interfacing microcontrollers with various low-speed peripheral devices. Each device connected to the bus is software addressable by a unique address and a simple master-slave relationship exists at all times. The I<sup>2</sup>C bus requires only two bi-directional bus lines, a serial data line (SDA) and a serial clock line (SCL). The data transfer rate is freely selectable and can be max. 400 kbit/s.

## 2 I<sup>2</sup>C bus protocol

### 2.1 General characteristics

Two lines, a serial data line (SDA) and a serial clock line (SCL), carry information between the devices connected to the bus (see Fig. 1). Any device with I<sup>2</sup>C compatible protocol can be attached to the bus. Both SDA and SCL are bidirectional lines, connected to a positive supply voltage via pull-up resistors (see section 4 Application Circuit). When the bus is free, both lines are HIGH. They can only be pulled LOW by the devices connected to the bus.

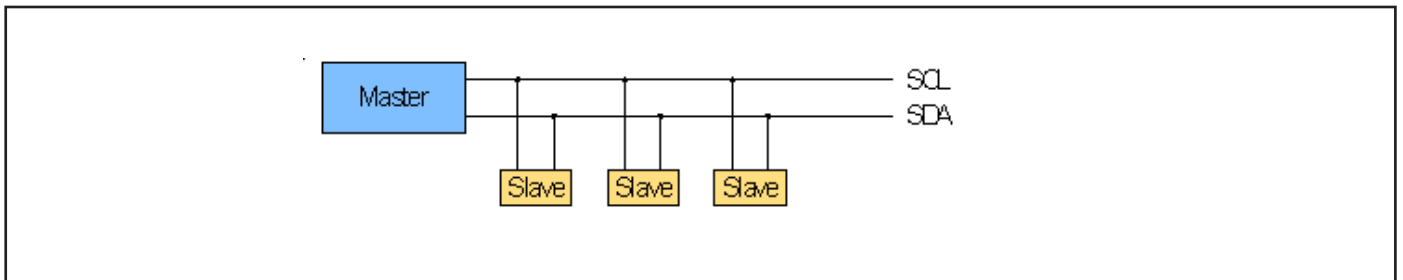


Fig. 1: Example of an I<sup>2</sup>C bus configuration

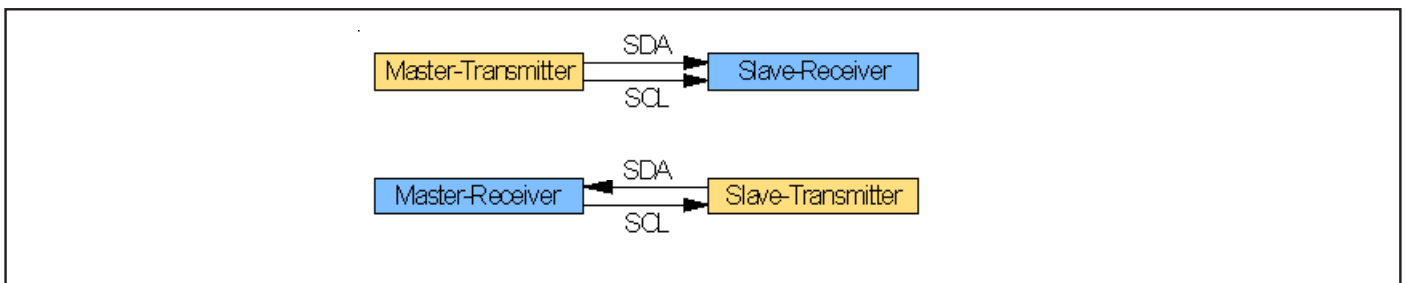


Fig 2: I<sup>2</sup>C master-slave concept

# I<sup>2</sup>C bus communication with digital HTD, HMI, HDI, HCLA, HCA and SSI pressure sensors

## 2.2. Master-slave concept

The I<sup>2</sup>C bus uses a simple master-slave concept. The master initialises a data transfer (START command), generates the clock (SCL) signal and terminates the transfer (STOP command). Any device addressed by the master is considered a slave.

Masters and slaves can operate as either transmitters or receivers, depending on their function (see Fig. 2). The transmitter is the device that sends data to the bus. A transmitter can either put data on the bus on its own accord (master-transmitter), or in response to

a request from the master (slave-transmitter). The receiver is the device that receives data from the bus. A receiver can either receive data on its own request (master-receiver) or in response to a request from the master (slave-receiver).

**NOTE:**

The digital HTD, HMI, HDI, HCLA, HCA and SSI pressure sensors are designed to work as slave-transmitters and will therefore only respond to requests from a master device.

## 2.3. Data validity

Data is only valid during the HIGH period of the clock. During this HIGH period the data on the SDA line must be stable HIGH to transmit a "1" or stable LOW for a "0". The HIGH or LOW state of the data line is only allowed to change when the clock signal on the SCL line is LOW (see Fig. 3).

## 2.4. START (S) and STOP (P) conditions

Prior to any transaction on the bus, a START condition needs to be issued. The START condition acts as a signal to all connected IC's that something is about to be transmitted on the bus. As a result, all connected devices will listen to the bus and the bus is considered to be busy. After a message has been completed, a STOP condition is sent by the master. In this way the master can notify that no further data will be

received or sent. This is the signal for all devices that the bus is idle again. START and STOP conditions are always generated by the master.

The START condition is defined as a HIGH to LOW transition on the SDA line while SCL is HIGH. The STOP condition is defined as a LOW to HIGH transition on the SDA line while SCL is HIGH (see Fig. 4).

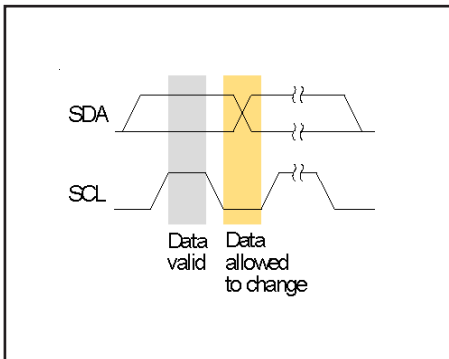


Fig. 3: I<sup>2</sup>C bus data validity

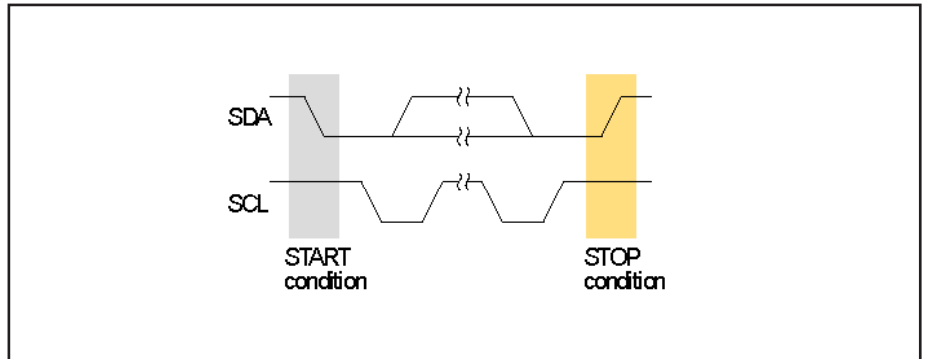


Fig. 4: I<sup>2</sup>C bus START and STOP conditions

# I<sup>2</sup>C bus communication with digital HTD, HMI, HDI, HCLA, HCA and SSI pressure sensors

## 2.5 Byte format

Every byte put on the SDA line must be 8-bits long. Data is transferred with the most significant bit (MSB) first and the other bits following down to bit 8, the least significant bit (LSB). As you can see in Fig. 5, the bit representing decimal number 128 will be transmitted first (MSB).

## 2.6 Addressing and data direction

The first byte after the START condition determines which slave will be selected by the master. Each slave has a unique address to identify it on the bus. This address is 7 bits long followed by bit 8 which is the data direction bit (R/W) (see Fig. 6). A '0' for the R/W bit indicates that the master wants to transmit information to a selected slave (WRITE), a '1' indicates that the master requests information from the slave (READ).

When an address is sent, each device in the system compares the first seven bits after the START condition with its own address. If they match, the device considers itself addressed by the master as a slave-receiver or slave-transmitter, depending on the R/W bit.

The 7-bit addressing allows 128 (2<sup>7</sup>) different addresses on the same bus. Since 16 addresses are reserved (in the Phillips specification), in practice 112 addresses remain for communication on the bus. However, the total number of devices connected to the bus is limited by the maximum bus capacitance CSDA=400 pF.

	MSB							LSB
Dual	0	1	1	0	1	1	0	1
Decimal	128	64	32	16	8	4	2	1

Fig. 5: I<sup>2</sup>C bus byte format

MSB							LSB
7 bit address							R/W
b7	b6	b5	b4	b3	b2	b1	b0

Fig. 6: I<sup>2</sup>C bus address byte

**NOTE:**

The digital I<sup>2</sup>C bus pressure sensors of the HTD, HMI, HDI, HCLA, HCA and SSI series have a general preconfigured slave address (0x1111000b). By factory programming it is possible to define an additional secondary slave address for each individual device. According to I<sup>2</sup>C bus specification 127 different addresses are available. The sensor will then listen to both slave addresses.

# I<sup>2</sup>C bus communication with digital HTD, HMI, HDI, HCLA, HCA and SSI pressure sensors

## 2.7. Acknowledge (ACK or A)

Each byte sent on the bus has to be followed by an acknowledge bit issued from the receiver for correct receipt of data. The acknowledge also means that the device is ready to continue the data transfer.

The master must generate an extra clock pulse for this purpose. The transmitter releases the SDA line (HIGH) during the acknowledge clock pulse. The receiver must pull down the SDA line so that it is stable LOW from the beginning (rising edge) of the acknowledge clock pulse until its end (LOW level after falling edge) (see Fig. 7).

If the receiver does not want to receive a further byte it leaves the SDA line HIGH and a not acknowledge (NACK or A) will be sent. Now the master can terminate the transfer with a STOP condition.

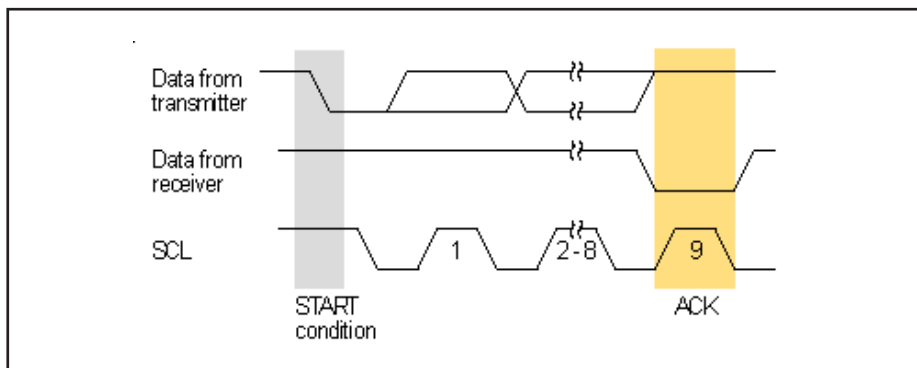


Fig. 7: Acknowledge (ACK) on the I<sup>2</sup>C bus

## 2.8. Data transfer overview

A complete data transfer is shown in Fig. 8. After the START condition, the slave address is sent. The data direction bit (R/W) determines whether it is a READ or WRITE transfer.

The addressed slave acknowledges (ACK) the correct receipt of the first byte. Now an unrestricted number of data bytes can be transmitted, always followed by an acknowledgement.

The data transfer is always terminated by a STOP condition generated by the master. If the master afterwards wishes to continue the communication, it has to generate a new START condition and initiate a new data transfer.

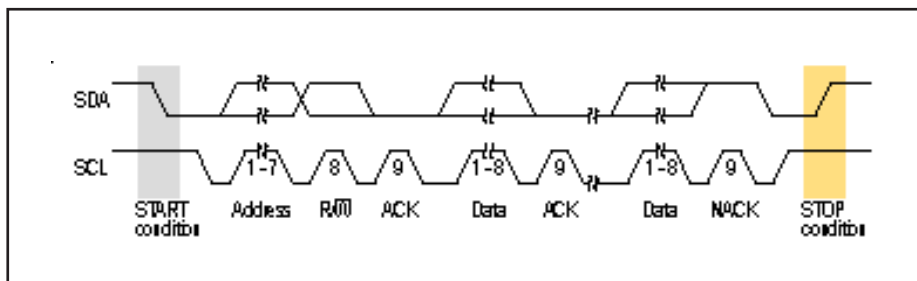


Fig. 8: Complete I<sup>2</sup>C bus data transfer

# I<sup>2</sup>C bus communication with digital HTD, HMI, HDI, HCLA, HCA and SSI pressure sensors

## 3. Data transfer with HTD, HMI, HDI, HCLA, HCA and SSI pressure sensors

The digital HTD, HMI, HDI, HCLA, HCA and SSI pressure sensors are designed to work as slave-transmitters and will therefore only respond to requests from a master device.

### 3.1 Pressure reading

To read out a pressure value the master generates a START condition and sends the sensors slave address (either the hard coded address 0x1111000bin or the secondary factory programmed address) followed by a READ command (R/W=1) (see Fig. 9). At the moment of the first acknowledge (A) from the sensor, the master-transmitter becomes a master-receiver. The sensor starts to send two data bytes containing the current pressure value as a 15 bit information placed in the output registers of its ASIC (see Fig. 10). The master must acknowledge the reception of the first data byte. To terminate the pressure reading from the sensor the master sends a STOP condition. The sensor is also able to send pressure values "online". That means if the master does not send a STOP condition but an acknowledge after the third exchanged byte the sensor-slave will go on sending the last available pressure value when it is clocked.

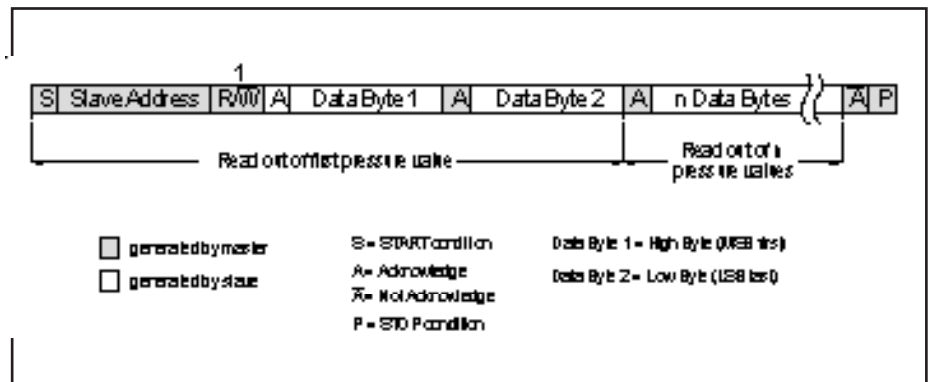


Fig. 9: Readout of digital pressure information using I<sup>2</sup>C bus protocol

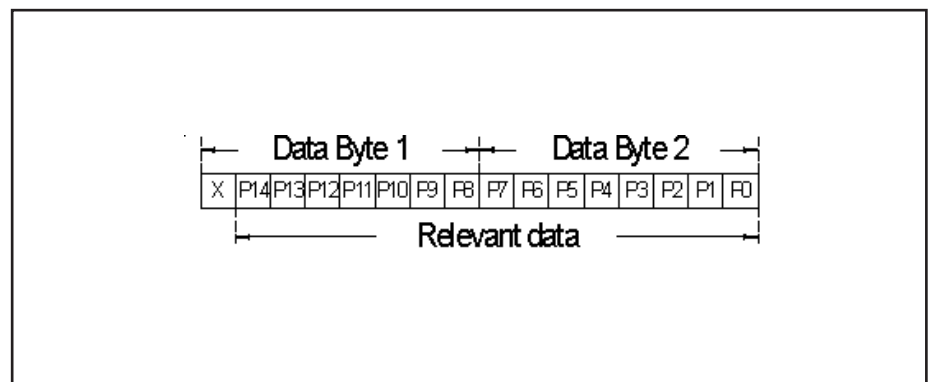


Fig. 10: Two data bytes containing the pressure value as a 15 bit information

**NOTE:**

With a SCL clock frequency of 400 kHz the exchange of the 2 data bytes containing the current pressure value takes about 40 μs. However, the internal sensor conversion cycle to obtain a new pressure value is 250 μs for 12 bit resolution. Therefore, if the sensors are not deactivated they will send up to 7 times the same digital pressure value. For further information please contact us.

# I<sup>2</sup>C bus communication with digital HTD, HMI, HDI, HCLA, HCA and SSI pressure sensors

## 3.2. Optional temperature reading

As an option the sensors can be factory configured to deliver an additional 15 bit temperature reading. This will then be transmitted as a 3rd and 4th byte after the pressure value. If there is an acknowledge sent after these two additional bytes the sensor will continue sending alternating pressure and temperature values until it is deactivated by a STOP condition.

## 3.3. Calculation of the actual pressure value from the digital pressure word

The following formulas show how to calculate the actual pressure value from the digital sensor output:

### Definitions:

- S = Sensitivity [counts/mbar]
- Out<sub>max</sub> = Output @ max. pressure [counts]
- Out<sub>min</sub> = Output @ min. pressure [counts]
- P<sub>max</sub> = Max. value of pressure range [mbar]
- P<sub>min</sub> = Min. value of pressure range [mbar]
- P = Pressure reading [mbar]
- P<sub>counts</sub> = Digital pressure reading [counts]

$$S = \frac{Out_{max} - Out_{min}}{P_{max} - P_{min}} \quad (1)$$

$$P = \frac{P_{counts} - Out_{min}}{S} + P_{min} \quad (2)$$

The following example shows the calculation for a HCLA0050...U device (pressure range 0...50 mbar unidirectional). Please refer to the data sheet for the specified calibration values.

$$\begin{aligned} Out_{min} &= 0666 \text{ counts hex} = 1638 \text{ counts dec} \\ Out_{max} &= 6CCC \text{ counts hex} = 27852 \text{ counts dec} \end{aligned}$$

With equation (1) the sensitivity of the sensor gives

$$S = \frac{27852 \text{ counts} - 1638 \text{ counts}}{50 \text{ mbar} - 0 \text{ mbar}} = 524,28 \text{ counts/mbar}$$

For an actual digital pressure reading of

$$P_{counts} = 5080 \text{ counts hex} = 20608 \text{ counts dec}$$

the actual pressure in mbar can be calculated from equation (2) to be

$$P = \frac{20608 \text{ counts} - 1638 \text{ counts}}{524,28 \text{ counts/mbar}} + 0 \text{ mbar} = 36,18 \text{ mbar}$$

This pressure reading is calculated with the typical calibration values, not taking into account that the individual sensor calibrations might differ within the tolerances specified in the data sheet.

## 3.4 Resolution of data

Each temperature and pressure value will be transmitted as a 15 bit word. However, the actual resolution can be less than this depending upon how the internal A/D-converter is configured. Also internal calculations and signal windowing will reduce the effective resolution. The standard resolution for pressure measurement is set at 12 bits, which results in an effective resolution of 11 to 12 bits. For temperature measurement the limiting factor is the sensitivity of the sensing element. For further information please contact us.

# I<sup>2</sup>C bus communication with digital HTD, HMI, HDI, HCLA, HCA and SSI pressure sensors

## 3.5. Timing parameters

Parameter	Symbol	Min.	Typ.	Max.	Unit
Bus free time between STOP and START condition	$t_{\text{BUF}}$	1.3			μs
Hold time (repeated) START condition, to first clock pulse	$t_{\text{HD,STA}}$	0.8			
LOW period of SCL	$t_{\text{LOW}}$	1.3			
HIGH period of SCL	$t_{\text{HIGH}}$	0.6			
Setup time repeated START condition	$t_{\text{SU,STA}}$	1			
Data hold time	$t_{\text{HD,DAT}}$	0			
Data setup time	$t_{\text{SU,DAT}}$	0.2			
Rise time of both SDA and SCL	$t_{\text{R}}$			0.3	
Fall time of both SDA and SCL	$t_{\text{F}}$			0.3	
Setup time for STOP condition	$t_{\text{SU,STO}}$	0.6			

Table 1: Timing parameters for I<sup>2</sup>C bus communication with HTD, HMI, HDI, HCLA, HCA and SSI pressure sensors

## 3.6. Communication parameters

The maximum allowed communication speed on the bus depends on the configured internal clock frequency of the HTD, HMI, HDI, HCLA, HCA and SSI pressure sensors. It is 400 kHz in the standard configuration.

## 3.7. Signal noise due to communication

As the pulses transmitted on the two bus lines have very sharp edges, this can cause some electromagnetic interference. Especially for very low pressure values and small PCB designs, these spikes can influence the analog millivolt measurement of the sensor bridge and downgrade signal quality. If both digital and analog interfaces are used in parallel it is

recommended to separate these lines as far as possible from each other. Further, decoupling capacitors of 220 nF between supply and ground and 15 nF between the analog output and ground are beneficial. It is important to place the capacitors as close to the pins as possible.



# I<sup>2</sup>C bus communication with digital HTD, HMI, HDI, HCLA, HCA and SSI pressure sensors

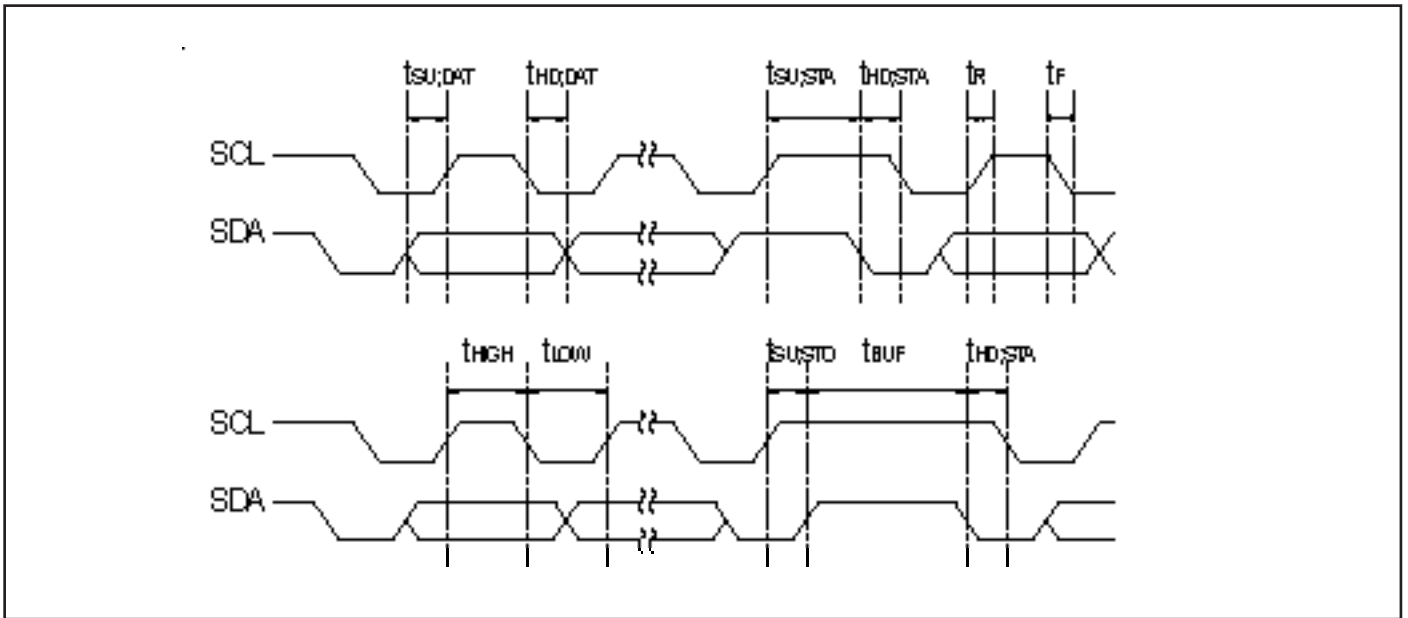


Fig. 11: I<sup>2</sup>C bus timing characteristics

Parameter	Symbol	Min.	Typ.	Max.	Unit
Input high level		90		100	% of V <sub>s</sub>
Input low level		0		10	
Output low level				10	
Pull-up resistor		500			Ω
Load capacitance @ SDA	C <sub>SDA</sub>			400	pF
Input capacitance @ SDA/SCL	C <sub>I2C, IN</sub>			10	
SCL clock frequency	F <sub>SCL</sub>	100*		400	kHz

\* recommended

Table 2: I<sup>2</sup>C bus communication parameters for HTD, HMI, HDI, HCLA, HCA and SSI pressure sensors

# I<sup>2</sup>C bus communication with digital HTD, HMI, HDI, HCLA, HCA and SSI pressure sensors

**NOTE:**

To prevent signal noise we recommend a min. clock frequency of 100 kHz (max. 400 kHz) and transmission breaks of min. 500  $\mu$ s between two pressure readings. This is especially valid for low pressure devices up to 25 mbar.  
Please contact us for more information.

## 4. Application circuit

Both SCL and SDA lines have to be connected to the sensor supply voltage via pull-up resistors  $R_P$  as shown in Fig. 12. We recommend to use 1.5 k $\Omega$  resistors. Additionally, serial resistors  $R_S$  of max. 240  $\Omega$  should be used in each communication line.

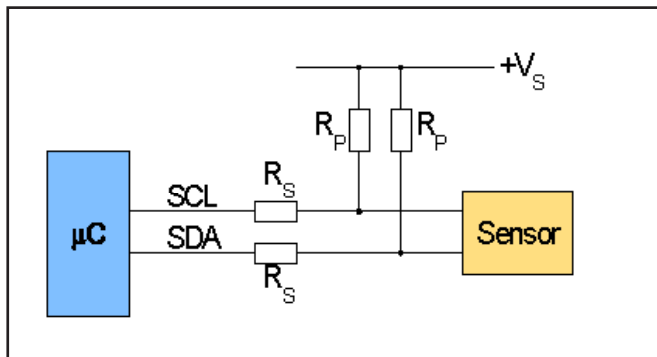


Fig. 12: I<sup>2</sup>C bus application circuit for HTD, HMI, HDI, HCLA, HCA and SSI pressure sensors

# I<sup>2</sup>C bus communication with digital HTD, HMI, HDI, HCLA, HCA and SSI pressure sensors

## 1. Troubleshooting

### 5.1 Sensor supplies unstable data

- Have the advices regarding signal noise under point 3.7 been followed?

### 5.2 Sensor does not respond

- For HTD, HDI, HCLA, HCA, SSI: Check the analog output signal of the sensor. If it responds to pressure changes the sensor works. Then, errors of the digital output can be limited to problems of the I<sup>2</sup>C bus.
- Switch the supply voltage on and off in order to restart the sensor.
- Check the acknowledge signals (ACK or NACK) and the STOP condition from the master in the application circuit. If the sensor has stopped the communication due to an error, it has to be restarted by power off and on.

### 5.3 Circuit for I<sup>2</sup>C reset

In the rare event that a sensor of the HTD, HD, HC, HM or SSI series freezes and the I<sup>2</sup>C bus is no longer accessible, the sensor can only be restarted by a hardware reset. If it is not possible to switch off the entire system, we recommend the circuit shown in Fig. 13 to perform a hard reset of the sensor without disconnection from the main power supply.

We recommend to use 10 k $\Omega$  resistors for R1 to R3. The following transistors (T1) have been tested and approved by First Sensor and are recommended for use:

- IRLB8743PBF, MOSFET, N-channel, R<sub>dson</sub> = 2.5 m $\Omega$ , package: TO-220AB
- IPD031N03L G, MOSFET, N-channel, R<sub>dson</sub> = 2.6 m $\Omega$ , package: TO-252

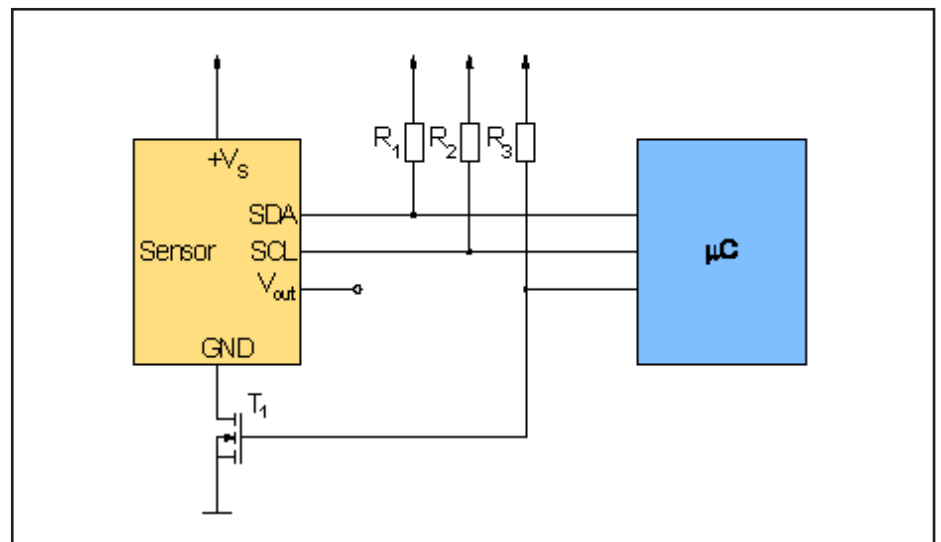


Fig. 13: Circuit for I<sup>2</sup>C reset