

### FEATURES

- 2-way and 3-way configurations
- Performs at high speed (opening response time  $\leq 5$  ms)
- Leak-tight to  $1 \times 10^{-7}$  cm<sup>3</sup>/s/atm Helium
- Configurable up to 1250 psi
- Offers repeatability and consistency
- Constructed of non-corrosive stainless steel
- Available with a variety of ports, seals and voltages



### MEDIA COMPATIBILITY

Liquids and gases

### WETTED MATERIALS

**Materials contacting media:**

PTFE, stainless steel, body, seals

**Body:**

316L stainless steel

**Seals:**

FKM & Vespel, FKM

### PHYSICAL PROPERTIES

Operating environment	4 to 105 °C
Weight (e.g. 3-way, 1/8" NPT body)	88 g
Porting	1/4"-28 threaded ports; 1/8" NPT (female); A-Lok compression fittings
Internal volume	various

### ELECTRICAL

Power	12 W
Voltage	12, 24 V <sub>DC</sub>
Current/Resistance ( $\Omega \pm 5\%$ @ 21 °C)	
12 V <sub>DC</sub>	1000 mA/12 $\Omega$
24 V <sub>DC</sub>	500 mA/48 $\Omega$

# Series 9

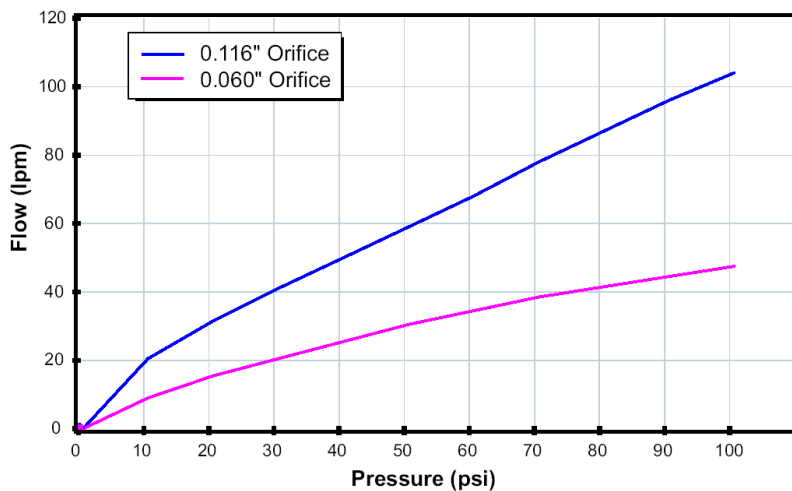
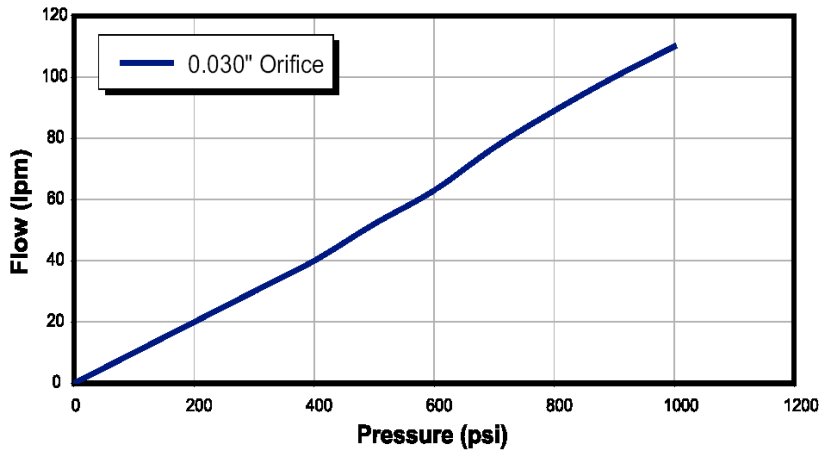
## High-performance media resistant solenoid valves

### PERFORMANCE CHARACTERISTICS

Part no.	Pressure	Orifice sizes	Leak rate*
See Ordering Information	Vacuum...86 bar (1250 psi)	0.030" (0.76 mm)	$1 \times 10^{-7}$ cm <sup>3</sup> /s/atm Helium
	Vacuum...17 bar (250 psi)	0.060" (1.52 mm)	
	Vacuum...7 bar (100 psi)	0.116" (2.99 mm)	

\* Not rated for continuous duty at maximum temperature.

### FLOW CURVES (typical air flow)

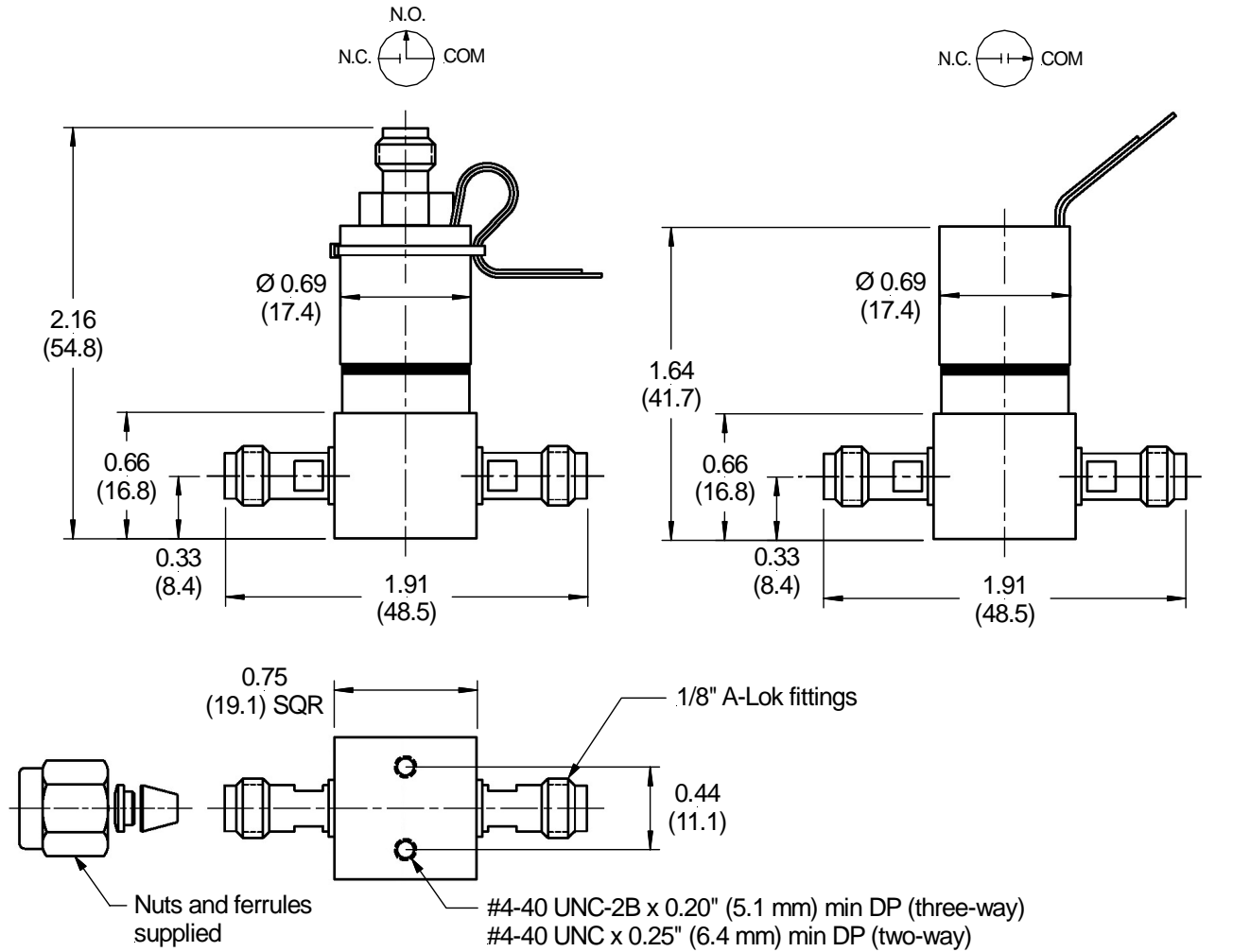


# Series 9

## High-performance media resistant solenoid valves

### OUTLINE DRAWING

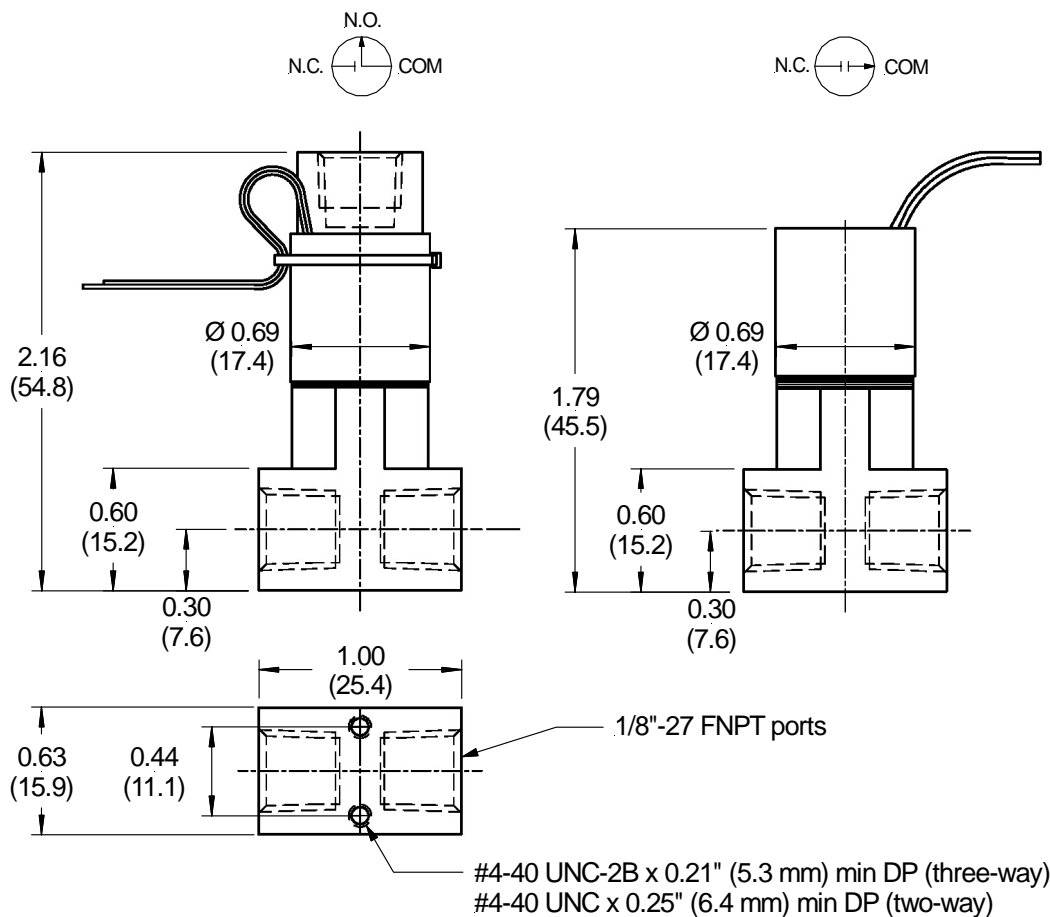
Part No. 009-0269-900 (3-way),  
009-0270-900 (2-way NC)



dimensions in inches (mm)

### OUTLINE DRAWING (cont.)

Part No. 009-0933-900 (3-way),  
009-0089-900 (2-way NC)



dimensions in inches (mm)

# Series 9

## High-performance media resistant solenoid valves

---

### ORDERING INFORMATION

Part No.	Type	Operating Pressure	Orifice	Voltage	Porting	Seals
009-0100-900	2-way NC	Vac...86 bar (1250 psi)	0.76 mm (0.030")	12 V <sub>DC</sub>	1/16" A-Lok	Vespel & FKM
009-0172-900						
009-0272-900				1/4"-28		
009-0270-900	3-way	Vac...17 bar (250 psi)	1.52 mm (0.060")	24 V <sub>DC</sub>	1/8" A-Lok	FKM
009-0631-900					1/8" FNPT	
009-0269-900					1/8" A-Lok	
091-0094-900	2-way NC	Vac...7 bar (100 psi)	2.99 mm (0.116")	12 V <sub>DC</sub>	1/8" FNPT	
009-0933-900						
009-0089-900			24 V <sub>DC</sub>			
009-0143-900	3-way					
009-0207-900			12 V <sub>DC</sub>			

First Sensor reserves the right to make changes to any products herein. First Sensor does not assume any liability arising out of the application or use of any product or circuit described herein, neither does it convey any license under its patent rights nor the rights of others.