

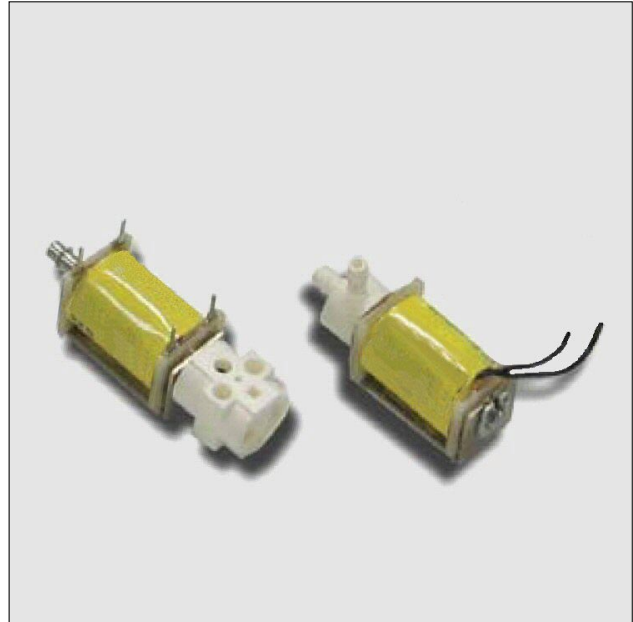


# TQ Series

## Switching solenoid valve

### FEATURES

- 2-way or 3-way, 2 position valve (NO, NC & Distributor)
- Meets performance characteristics for a minimum of 25 million cycles
- Cost-effective, unique PBT body
- Manifold mount design or molded barbed fittings to fit a range of needs
- PRO services



### MEDIA COMPATIBILITY

Non-corrosive gases

### WETTED MATERIALS

Body:  
PBT (Polybutylene Terephthalate)

Stem base:  
360 HO2 brass

All others:  
FKM; 430 FR series stainless steel (passivated);  
302 series stainless steel; Loctite® 290

### ELECTRICAL

Power	0.5, 1.0 or 2.0 W
Voltage	5, 12, 24 V <sub>DC</sub> ± 10%

### PHYSICAL PROPERTIES

Operating environment	0 to 70 °C
Storage temperature	-40 to 70 °C
Length	43.9 mm (1.73 in)
Width	15.9 mm (0.625 in)
Height	17 mm (0.67 in)
Porting	Barb fittings for 1/8 in I.D. tubing or manifold mount
Weight	34 g (1.2 oz)
Internal volume	0.016 cm <sup>3</sup> (nominal)
Filtration (recommended)	40 µm
Lubrication	None required

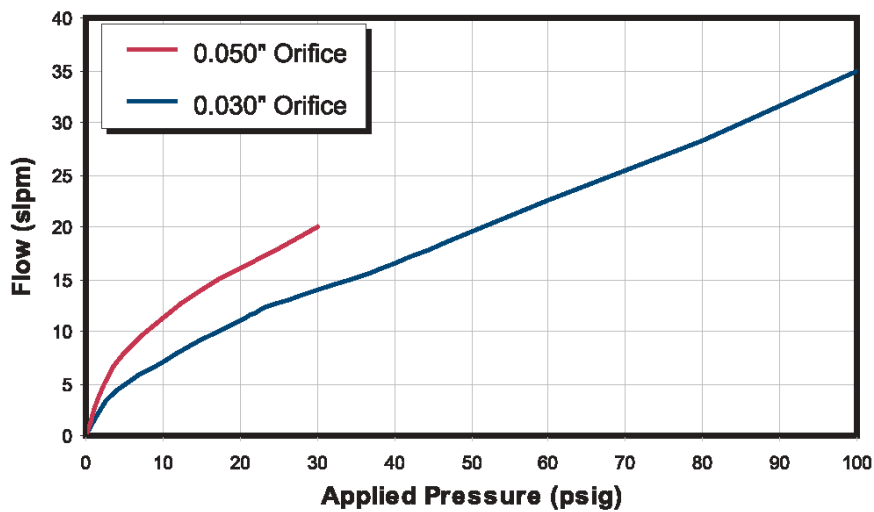
Loctite® is a registered trademark of Henkel Consumer Adhesives, Inc.



### PERFORMANCE CHARACTERISTICS

Part no.	Pressure	Vacuum	Orifice sizes/ Equivalent $C_v^1$	Power	Leak rate <sup>2</sup>	Response
TQ...P100...	0...100 psig	0...27 "Hg (0...13 psi)	0.030" (0.762 mm)/ 0.017 $C_v$	2 W	≤0.2 sccm	<30 msec cycling
TQ...P050...	0...50 psig			1 W		
TQ...P025...	0...25 psig			0.5 W		
TQ...P030...	0...30 psig		0.050" (1.270 mm)/ 0.035 $C_v$	2 W		
TQ...P015...	0...15 psig			1 W		
TQ...P006...	0...6 psig			0.5 W		

### FLOW CURVES (typical air flow)<sup>3</sup>



#### Notes:

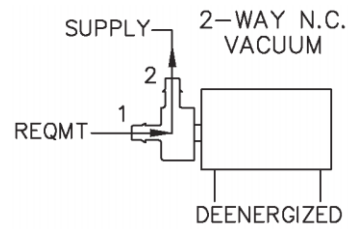
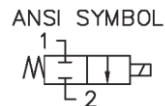
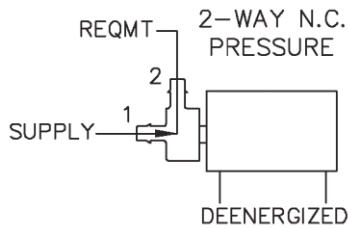
1. The  $C_v$  value is the volume flow in US gallons/min under specific flow conditions and describes the relative flow capacity of a valve. The equivalent european measure is the  $k_v$  value expressed in  $m^3/h$  ( $k_v = 0.86 C_v$ ).
2. sccm denotes Standard Cubic Centimeters per Minute. It is a unit for the flow rate at standard conditions of temperature and pressure. 1000 sccm = 1 slpm.
3. slpm denotes Standard Liters per Minute. It is a unit for the flow rate at standard conditions of temperature and pressure. 1 slpm = 1000 sccm.



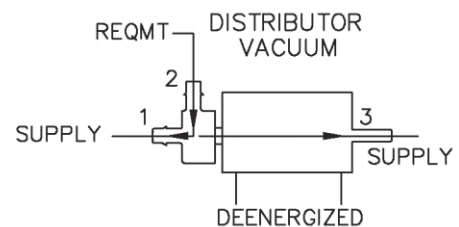
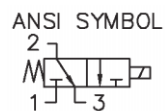
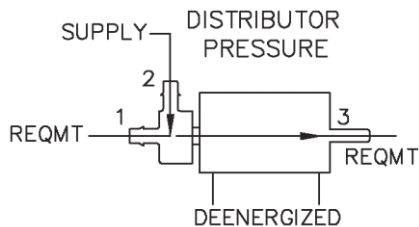
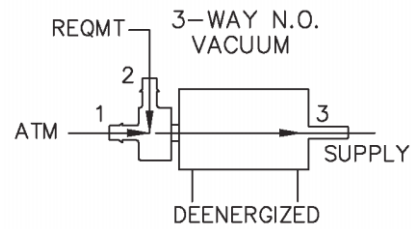
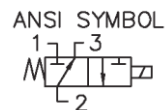
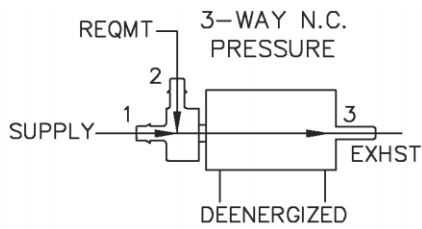
# TQ Series Switching solenoid valve

## VALVE TYPE

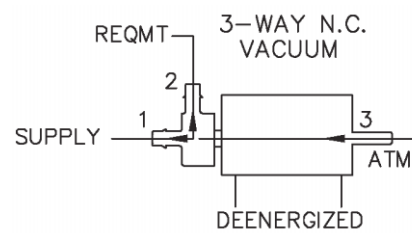
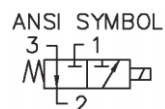
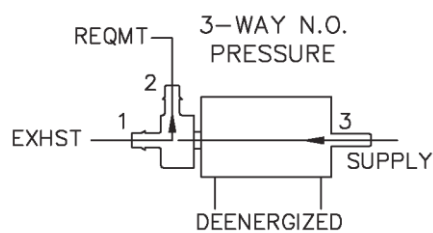
### 2 way NC



### 3 way NC or distributor



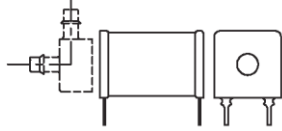
### 3 way NO



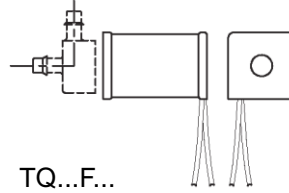


# TQ Series Switching solenoid valve

## ELECTRICAL CONNECTION

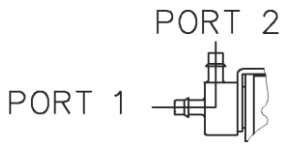


TQ...P...  
(PC mount, 4 PC pins)

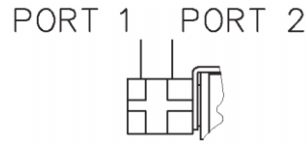


TQ...F...  
(Wire leads, no terminals)

## PNEUMATIC CONNECTION - BODY

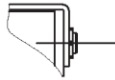


TQ...8...  
(1/8" I.D. tubing)

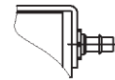


TQ...0...  
(Manifold mount)

## PNEUMATIC CONNECTION - STEM



TQ...0  
(Top seat, plugged)



TQ...8  
(0.125" top seat, 1/8" I.D. tubing)

## ORDERING INFORMATION

Options	Series	Ways	Pressure		Function		Elastomer		Voltage		Electrical	Pneumatic connection					
			Code	psi	C*	NC	V	Viton (FKM)	05	5 V <sub>DC</sub>		0	Body	0	Stem		
	TQ	2	2 way	P006	6 psi	C*	NC	V	Viton (FKM)	05	5 V <sub>DC</sub>	F	Wire leads	0	no barbs	0	none
		3	3 way	P015	15 psi	P	NO			12	12 V <sub>DC</sub>	P	PC board mount	8	1/8" barbs	8	1/8" barbs
				P025	25 psi					24	24 V <sub>DC</sub>						
				P030	30 psi												
				P050	50 psi												
				P100	100 psi												
* 3 way NC version can also be used as distributor																	
Example:	TQ	3		P030		C		V		12		P		8		8	

**Note: Not all combinations might be available. Please contact First Sensor.**

### PRO services:

- Extended warranty period of 2 years
- Advanced logistics models for supply inventory and short delivery times
- Technical support through application engineers on the phone or at your site
- Fastest possible technical response for design and QA engineers
- ... plus other services on request

First Sensor reserves the right to make changes to any products herein. First Sensor does not assume any liability arising out of the application or use of any product or circuit described herein, neither does it convey any license under its patent rights nor the rights of others.